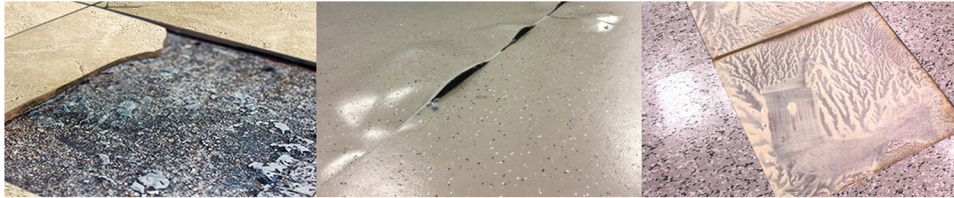




**“PREVENT FLOORING FAILURES”**  
**“TEST YOUR CONCRETE FLOORS BEFORE YOU INSTALL!”**



Do you know the **COMMERCIAL FLOORING** industry requires moisture mitigation testing on new concrete surfaces prior to any floor covering installations?

**Zenith Painting and Coatings**, a Denver based professional floor coating company, is here to help! Zenith can provide you with accurate concrete moisture testing services; as well as provide you with a number of solutions should any moisture issues arise. By performing the proper testing and offering professional moisture mitigation control coating solutions, you can trust us to get your project back on track!



Currently, many builders, designers and architects within the commercial building industry require certain ASTM standards to be met. The standards below are commonly required for all new concrete and concrete floor covering installations:

### ASTM STANDARDS

**ASTM F2170-17:** Standard test method for determining relative humidity in concrete floor slabs using In-Situ Probes.

**ASTM F925:** This test method provides a procedure for determining the resistance of resilient floor covering to surface deterioration when exposed to various chemical reagents.

**ASTM F1515:** Standard practice for measuring light stability of resilient flooring by color change.

**ASTM F970:** The static load limit test method measures the recovery properties of resilient floor covering, after long-term indentation (namely 24 hours) under a specific load. The reported value, residual indentation, is the depth of the indentation remaining on the sample, 24 hours after the specified load is removed.

Prevent these flooring failures by testing your concrete floor MVE. CALL US TODAY.

C: 720-490-3987

O: 720-855-7019



**Zenith's** approach to moisture mitigation in ALL environments begins with our philosophy that flooring failures are simply **not an option!** Commercial flooring must be in commission **at all times**, whether it's to meet the facility's operating requirements or to meet the needs of the general public.

Zenith installs floors that are designed to withstand:

- High traffic
- 24 / 7 / 365 access
- Rigorous and frequent cleaning
- Frequent moisture and chemical exposure

Our solutions are tailored to commercial applications and take into consideration the **best industry practices** while providing low cost solutions for environment such as:

Manufacturing Facilities  
Processing Facilities  
Pharmaceutical  
Food and Beverage  
Aerospace & Aviation

Data Centers  
Warehousing  
Logistics  
Government Facilities  
Packaging

**Zenith Painting and Coatings** has made it their goal to align themselves with the industry leading coatings manufacturers to offer their customers a comprehensive list of solutions.

### Vendor Partners

Ardex  
Rock Tred  
Eco-CorFlex  
Elite Crete Systems  
General Polymers

PPG  
H & C Concrete  
Uniflex  
GACO Western  
Uzin

Prevent these flooring failures by testing your concrete floor MVE. CALL US TODAY.

C: 720-490-3987

O: 720-855-7019

For more information visit our website at: [www.zenithhomefinishes.com](http://www.zenithhomefinishes.com)